

Q.1 A) Answer the following questions

5

1)

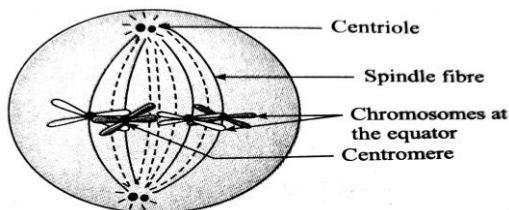


The diagram besides is a form of RNA? Identify it and give its use.

2) What is pollination?

3) Give the function of the Placenta.

4)



Identify this stage of Cell Division

5) How can we conserve Biodiversity?

B) Match the following pairs

5

Column I	Column II
Polluting energy	Rehabilitation of displaced people
Pollutants	Limited reserves
Natural gas	Nuclear energy
Hydroelectric Energy	Soot particles
Hazards to the ecosystem	Thermal energy

Q.2 Answer the following Questions. (Any Five)

10

1) What is radioactive pollution? What are its effects?

2) What were the objections raised against Darwinism?

3) Give reasons 'All vertebrates are chordates but all chordates are not vertebrates.'

4) Give difference between: Male and Female reproductive system.

5) How do all the life processes contribute to the growth and development of the body?

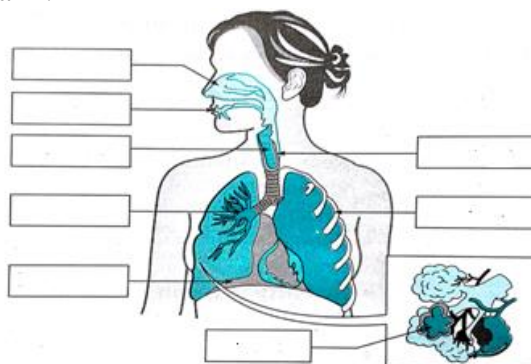
6) How does the bread become spongy?

7) State various methods of electricity generation.

Q.3 Answer the following Questions. (Any Five)

15

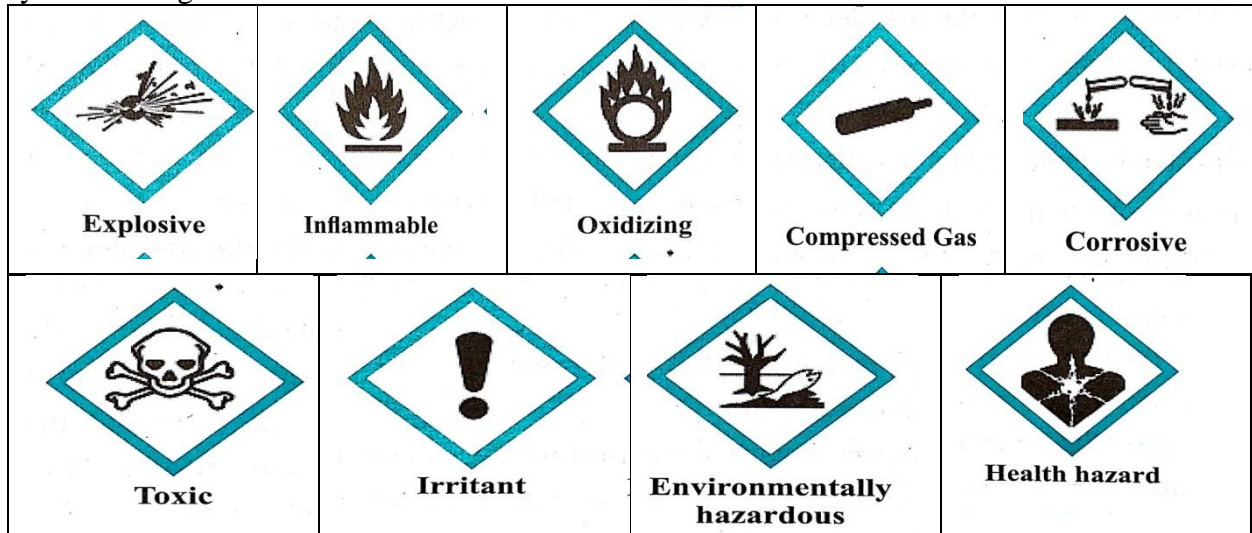
1) Observe and label the diagram :



2) Write short note on: Connecting link.

3) Some symbols are given below. Explain those symbols. Which disasters may occur if those

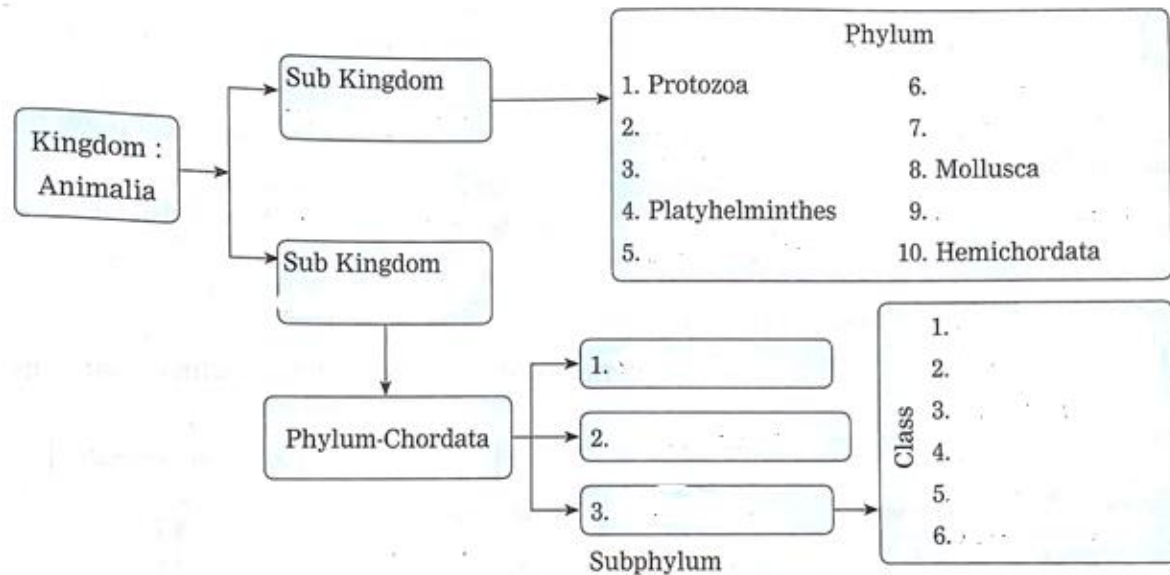
symbols are ignored?



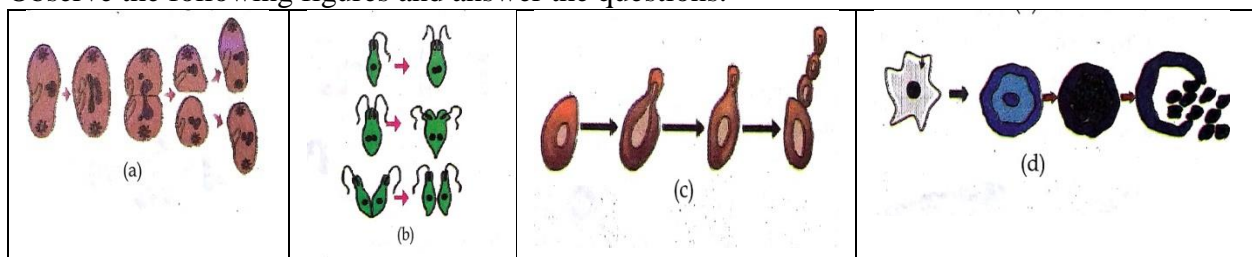
- 4) Explain the process of Glycolysis in detail?
- 5) Modern techniques like surrogate mother, sperm bank and IVF technique will help the human beings. Justify this statement.
- 6) Explain details on happenings about blue whale game.
- 7) What are the various ways to minimize mental stress?

Q.4 Answer the following.

1)



2) Observe the following figures and answer the questions.



- i) What do the above figures show? Label them properly.
- ii) In which types of 'Living organism' do the above life process take place?
- iii) Why is the parent cell important in this life process?
- iv) How are these processes different from each other?

v) Explain each figure in details.

*This question paper is for practice purpose only.